

112781 SH 1

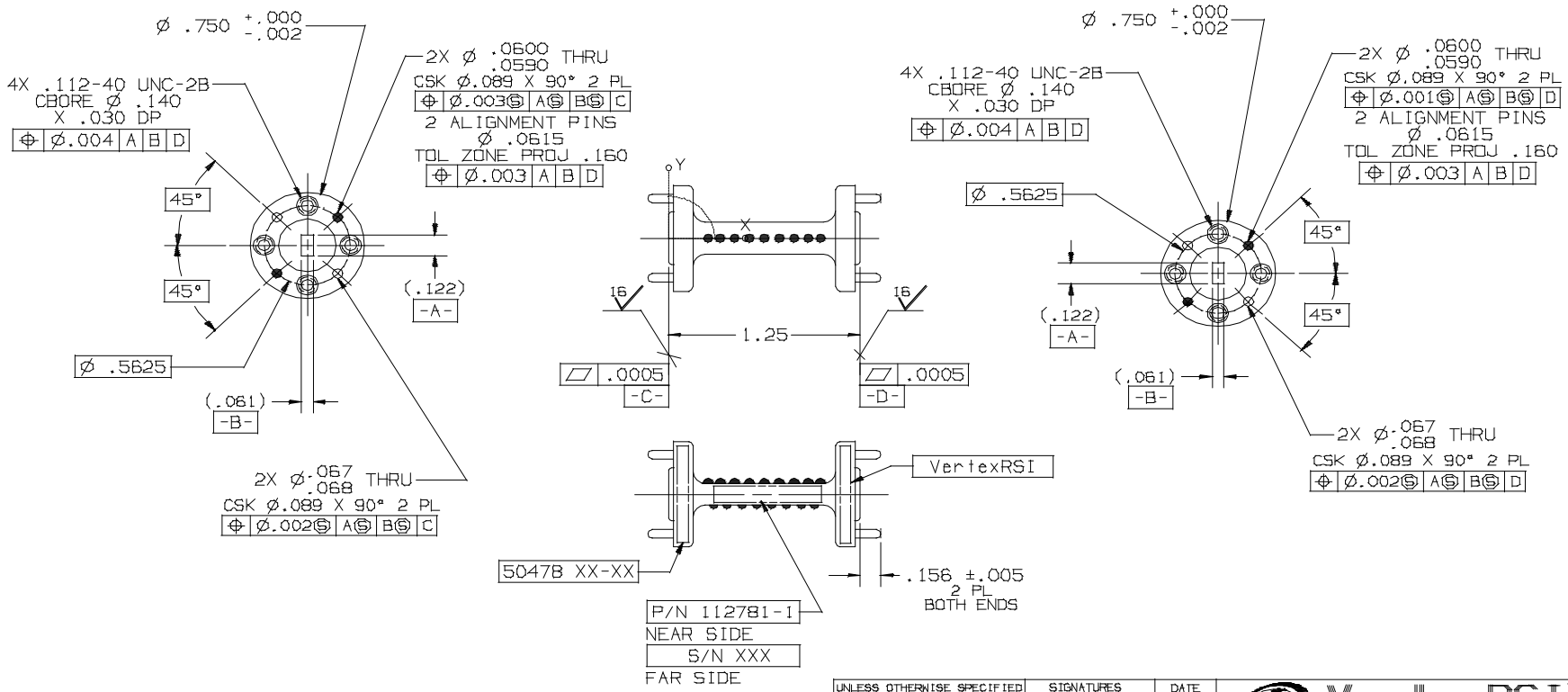
SPECIFICATIONS

FREQUENCY BAND: 84.0 - 92.0 GHz  
 INSERTION LOSS: 0.60 dB  
 VSWR : 1.15:1 MAX  
 REJECTION : 30.0dB MIN AT 80.0 AND 96.0 GHz  
 3.0dB MIN AND 7.0dB MAX AT  
 84.0 AND 92.0 GHz

FINISH:  
 FLANGE FACES: BRASS  
 EXTERIOR: BLACK PAINT COLOR  
 NO. 37038 PER  
 FED-STD-595

REVISIONS

REV	DESCRIPTION	DATE	APPROVED
-	INITIAL RELEASE	09-05-02	



DIMENSIONS ARE IN INCHES	SIGNATURES		DATE
	DRAWN	TOVAL IN. L.	09-05-02
TOLERANCES	CHECKED		09-05-02
SURFACE	ENGR		
4	ENGR		
✓ ANGLES ± 0° 15'	IFB		
MATERIAL			
EF COPPER			
FINISH			

**VertexRSI™**  
 A TriPoint Global Company  
 Torrance, CA Facility. TORRANCE@TRIPPOINTGLOBAL.COM  
 3111 Fujita St., Torrance, CA 90505, (310)539-6704

**BANDPASS FILTER  
 E-BAND**

SIZE: C FSCM NO.: 50478 DRAWING NO.: 112781  
 SCALE: 1/2 SHEET 1 OF 1