

112081 | 1

**SPECIFICATIONS**

**FREQUENCY BAND**  
 1: 2025 - 2110 MHz  
 2: 2200 - 2290 MHz  
 3: 1670 - 1710 MHz

**ISOLATION, BAND 2**  
 2 TO 3: 110 dB MIN  
 2 TO 1: 40 dB MIN

**INSERTION LOSS**  
 1: 0.25 dB MAX  
 2: 0.40 dB MAX  
 3: 0.25 dB MAX

**ISOLATION, BAND 3**  
 3 TO 1: 120 dB MIN  
 3 TO 2: 120 dB MIN

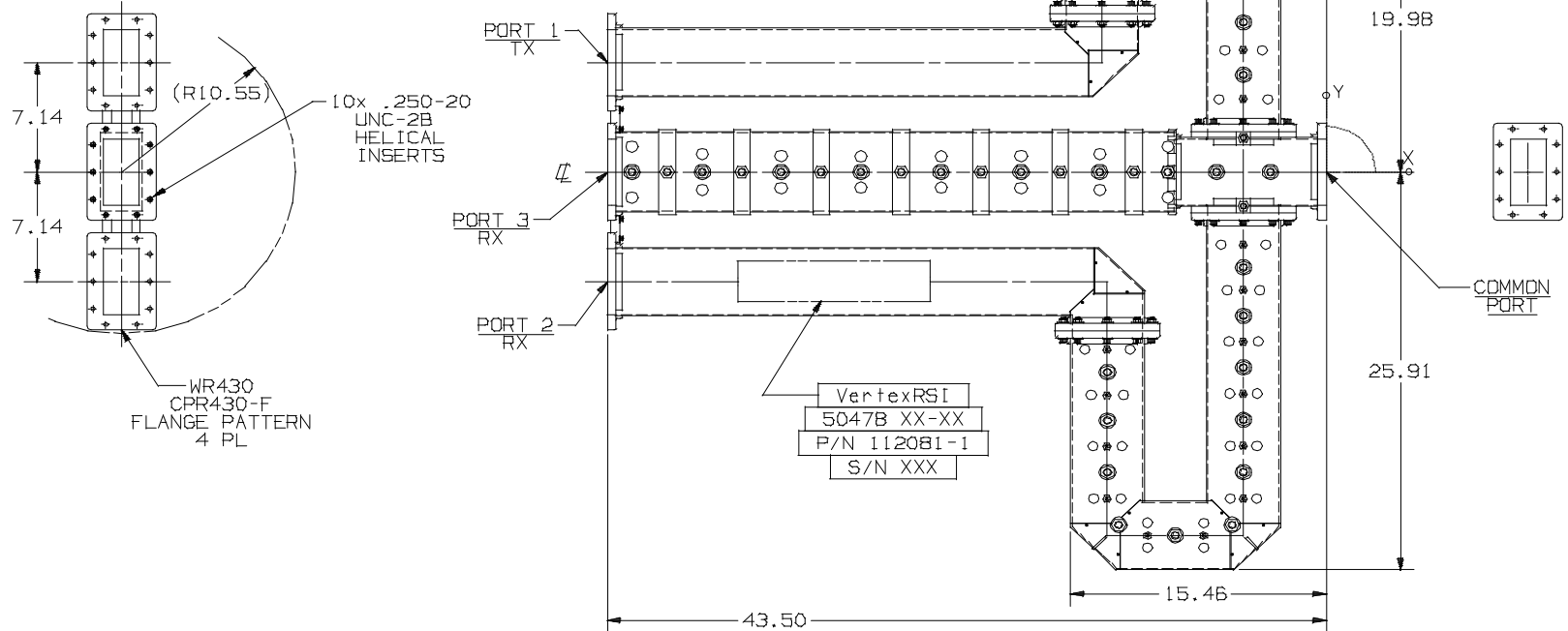
**VSWR (All Ports): 1.20:1 MAX**

**POWER HANDLING : 1.1 KW CW**  
**PRESSURIZATION : SEALED TO 1.0 PSIG**

**ISOLATION, BAND 1**  
 1 TO 2: 120 dB MIN  
 1 TO 3: 120 dB MIN

**FINISH INTERIOR & FLANGE FACES: CHEMFILMED PER MIL-C-5541, CLASS 1A**  
**EXTERIOR: WHITE PAINT, COLOR #17875 PER FED-STD-595.**

REVISIONS			
REV	DESCRIPTION	DATE	APPROVED
A	SEE REVISION SHT	09-10-99	



- 1 CONFIGURATION

UNLESS OTHERWISE SPECIFIED DIMENSIONS ARE IN INCHES TOLERANCES-	SIGNATURES	DATE
SURFACE .XX ±.03 .XXX ±.010 ✓ .XXXX ±. ANGLES±	DRAWN: H. Lim CHECKED: ENGR: ENRFD: MFR:	04-14-99 05-13-99
MATERIAL		
FINISH		

**VertexRSI™**  
 A TriPoint Global Company  
 Torrance, CA Facility, TORRANCE@TRIPPOINTGLOBAL.COM  
 3111 Fujita St., Torrance, CA 90505, (310)539-6704

**S/L BAND TRIPLEXER**

SIZE	FSCM NO.	DRAWING NO.
C	5047B	112081
SCALE: 1/8"		SHEET 1 of 2